

PANTUM

EFFORTLESS AND STRIKING A3 COLOR PRINTING

ULTRA 270/330/420 SERIES

CM270ADN / CM330ADN / CM420ADN



WWW.PANTUM.COM

Running Forward



ULTRA 270/330/420 SERIES

Pantum's A3 color multifunction printer is the ultimate solution for SMB users seeking efficient office work. It combines printing, copying, and scanning capabilities, offering a user-friendly printing solution. This printer features excellent print quality, high productivity, a user-friendly operation interface, powerful paper handling capabilities, stable performance, reliable security, and optional tools to meet high flexibility and efficiency. This means you now have the freedom to choose a convenient and efficient way to work, ultimately saving you time and resources.

【Copy/Print】

CM420ADN: 35 pages/minute
CM330ADN: 30 pages/minute
CM270ADN: 25 pages/minute

【Scan】

Mono 55 pages/minute

【Print resolution】

Standard 600 * 600dpi
Maximum 1200 * 1200dpi

【Control panel】

7-inch color touchscreen

【ADF capacity】

110 pages

【Paper handling】

Standard 500 pages
Maximum 2096 pages

HIGH PRODUCTIVITY UNLEASHED



Provides quick start mode, the operation panel is ready in 6 seconds.



Preheats in less than 28 seconds.



High-speed scanning with a high-capacity automatic document feeder.
Up to 55ppm scanning speed, 110-page large capacity ADF Support automatic conversion of non-standard size originals to standard size.



Supports USB printing and scanning to USB, which can improve operational efficiency.



Various combinations, high productivity.

SIMPLICITY OF EFFORTLESS OPERATION



7-inch color touchscreen, adjustable operation panel

Different colored lights notifications when a job is completed or an error occurs. Reminders and alarms provide subtle sound notifications for easy identification.



Simple and clear UI design

Icons are evenly distributed and easy to identify. The home screen supports personalization for easy access to commonly used functions. Commonly used settings are easily fixed and support registration of frequently used or repeated tasks.



Standard RADF

Automatic duplex copying and scanning. Support automatic deflection correction to ensure correct paper copying and scanning.



Paper post-processing function

Staple, staple-free staple, saddle staple, crease and other functions, providing users with more choices.

ENHANCED SECURITY FOR CONFIDENT PRINTING



- Secure printing: The machine can only issue jobs after entering the password set by the user.
- Automatic reset: If the machine does not perform any operation for a while, it will automatically reset to the default setting state. Prevent printing errors due to the previous user's settings not being modified.
- Authentication function (preventing unauthorized access): Manage user permissions by system administrator and logged-in user.
- Information encryption: The communication path is encrypted using SSL/TLS or IPsec, supports SMBv3.

UNCOMPROMISED PRINTING QUALITY



Paper post-processing function

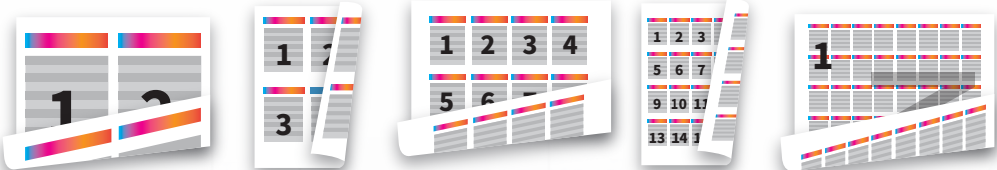
LED print head with resolutions up to 1200×1200 dpi (mono).



Automatic correction

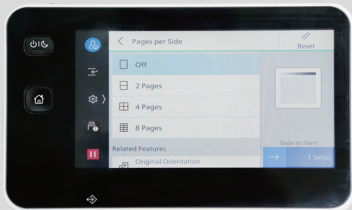
Ensure scanning quality and support automatic correction.

GREEN PRINTING EFFICIENT PERFORMANCE



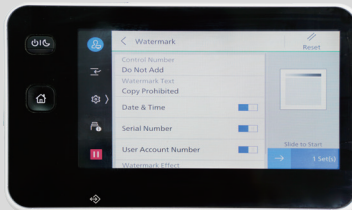
- Equipped with a space-saving and energy-saving LED print head.
- Optimize power consumption by utilizing the smart power-saving feature to individually power the required components based on customer usage patterns.
- Staple-free binding helps reduce waste and provides peace of mind where security or contamination is a concern.
- Print, scan, and multi-sheet in one printing helps reduce paper consumption.

EXTENDED FUNCTIONS FOR DIVERSE NEEDS



Multi-page copying

Supports 2in1, 4in1, and 8in1 modes. Free to adjust the layout order and original placement direction.



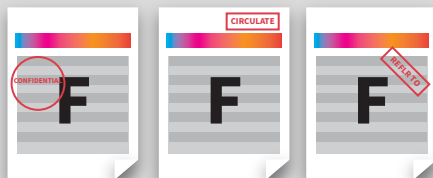
Watermark copy

Supports adding watermarks to your copies through the printer control panel's watermark copying function.



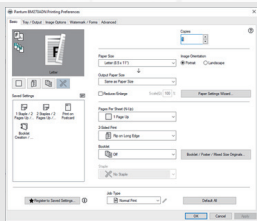
Booklet printing

Supports personalized booklet printing settings. Users can set paper size, binding edge settings, etc.



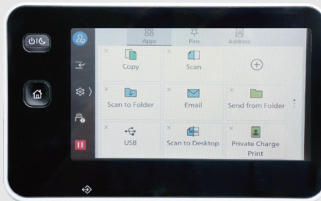
Watermark printing

Create and use watermarks when printing. It supports the customized setting of the watermark. This function can be used as an anti-counterfeiting mark and a source of copyright for explanatory files to meet different file printing needs.



Delayed printing

After sending the print job from the driver, you can enter the actual time to print, and it will print at a specific time.



More scanning destination

Supports scanning to USB flash drive, Email, SMB, FTP, SFTP, Folder.



Ultra 270/330/420 Series

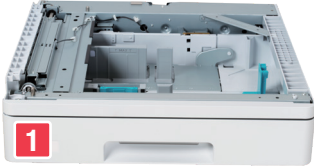
A3 Color Multifunction Printer

KEY SPECIFICATIONS

MODEL	■ CM270ADN	■ CM330ADN	■ CM420ADN
FUNCTIONS	Print/Copy/Scan	Print/Copy/Scan	Print/Copy/Scan
PRINT			
Print speed	25ppm	30ppm	35ppm
Duplex print speed	Color: 18ipm; Mono: 21ipm		
First print out time	Mono: 5.9s; Color: 12s		
Maximum monthly duty cycle	37,000 pages	52,000 pages	69,000 pages
Recommended monthly duty cycle	5,000 pages		
Print languages	PCL5/PCL6		
Processor speed	1296MHz dual core		
Memory	4GB		
Hard disk	128GB standard		
Operation panel	7inch touch screen		
Duplex printing	YES		
USB flash drive printing	YES		
COPY			
Copy speed	25ppm	30ppm	35ppm
Duplex copy speed	Color: 18ipm; Mono: 21ipm		
First copy out time	FB: Mono: 5.9s; Color: 12s; RADF: Mono: 9s; Color: 11.6s		
Copy mode	Automatic/Text/Graphic/Text/Photo/Map		
Copy pages	1-999 pages		
Copy reduce/enlarge settings	25-400%		
SCAN			
Scanner type	Flatbed+RADF		
Scan mode	Color, Grey, Mono		
Scan technology	CCD		
ADF capacity	110 pages		
Scan speed	55ppm		
Duplex scan	Mono: 21ipm; Color: 19ipm		
Scan area	Max. A3		
Color scanning	YES		
Scan format	Gray Scale/Color: TIFF, JPEG, PDF; BW: TIFF, PDF		
Scan destinations	Scan to PC(SMB, FTP, WSD)/USB/Email(SMTP)		
Scanner application	YES		
PAPER HANDLING			
Paper input capacity	Standard: 500 pages + 96 pages; Maximum: 2,096 pages		
Paper output capacity	400pages(A4 landscape)/200pages(A3)		
GENERAL			
Product dimensions(D*W*H)	590*659*771 mm		
Product net weight(kg)	70.55kg		
Power	AC220-240V/50/60Hz/8A		
Interface	High-speed USB 2.0/3.0; Ethernet 10/100/1,000Base-T		
Windows system	Windows 11/Windows 10/Windows Server 2022/Windows Server 2019/Windows Server 2016 / Windows Server 2012 R2/Windows Server 2012 (32bit/64bit)		
Mac system	Mac OS 13/12/11/10.15/10.14		
Linux system	Redhat 9/8, Ubuntu 22.04/20.04		
CONSUMABLE			
Type	Separate toner and cartridge		
Toner cartridge	CTO-2600K: 22,000 pages; CTO-2600Y/CTO-2600M/CTO-2600C: 15,000 pages		
Drum unit	CDO-2600: (121,000 pages, K) (87,000 pages, C/M/Y)	CDO-2600: (126,000 pages, K) (96,000 pages, C/M/Y)	CDO-2600: (126,000 pages, K) (96,000 pages, C/M/Y)

Remarks:
 1. The maximum monthly print load is the range of pages to help customers evaluate product offerings based on the average number of pages customers are prepared to print on the device each month. Customers are advised that the number of pages printed per month should be within the device's recommended range for optimum performance. In addition, other factors that should be considered include: consumable replacement intervals, paper loading intervals, print speeds, and typical applications of the customer.
 2. The paper capacity is calculated according to the 75g/m² standard test paper. If the paper thickness or weight is different, the capacity will be affected.
 3. The output tray specifications are affected by the printing environment, paper brand, paper weight, etc., and the actual specifications may vary.
 4. Cartridge capacity is the average yield of the toner cartridge in text one-sided (longside sided) mode for continuous printing, based on the ISO/IEC 19752 standard for color machines. Actual yields may vary based on device speed, paper size and orientation, toner coverage, tray source, percentage of black-only printing and average print job complexity, among other factors.

OPTIONAL PARTS



■ Optional paper tray

- 1. PT-270: 500 pages
- 2. PT-270H: 1500 pages
- 3. PT-270X: 500 pages with cabinet

■ Finisher

- 1. PF-270: Staple
- 2. PF-270X: Staple, staple-free
- 3. PK-270P: Hole punch module
- 4. PK-270B: Saddle stapling unit